



Roberto Series

Stone Basel



TILES BY TINA

www.tilesbytina.com

732.539.4655

tserpico@tilesbytina.com



PORCELAIN

Roberto Series Stone Basel

Stone Basel replicates the soft touch of volcanic rock polished by water and its texture under light in a porcelain proposal for both floor and wall. This collection is ideal for those who seek perfection and take care of every detail.

Stone Basel Grafito 24"x48"



Color Body Porcelain

◇ 48"x48" R - 24"x48" R - 12"x24" R - 16"x48" R Wall



Stone Basel Caliza 24"x48" R



TILES BY TINA
www.tilesbytina.com



Stone Basel Gris 12"x24" R



Stone Basel Negro 12"x24" R

Stone Basel

Color Body Porcelain



TILES BY TINA
www.tilesbytina.com



48"x48" R 24"x48" R 12"x24" R
120x120 cm 60x120 cm 30x120 cm



Caliza



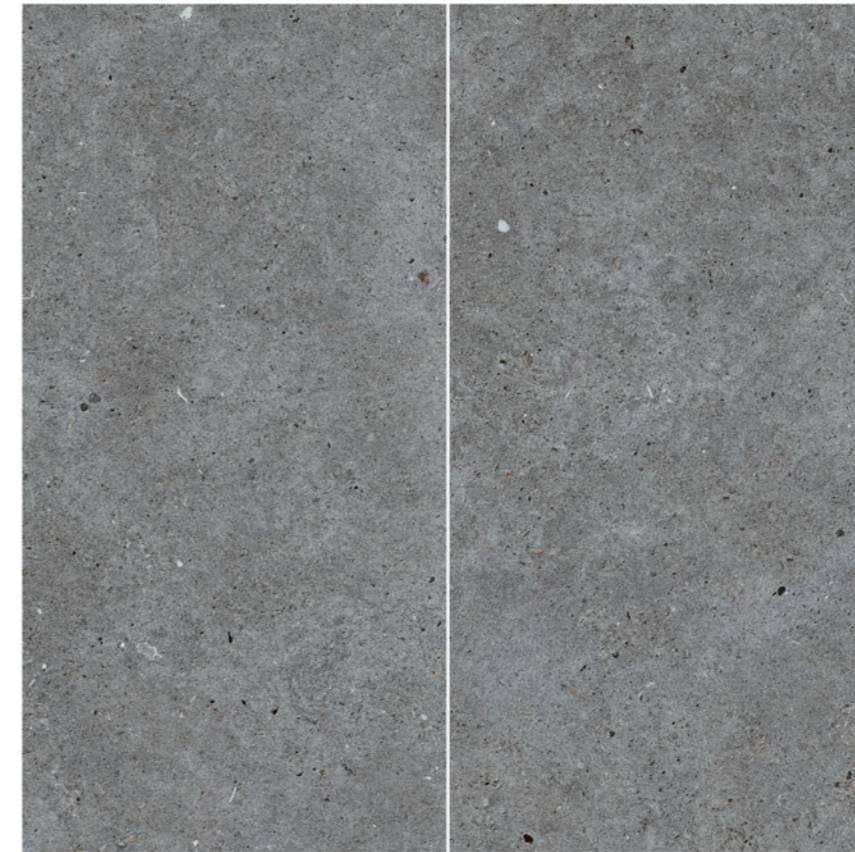
48"x48" R



24"x48" R



12"x24" R



Grafito



48"x48" R



24"x48" R



12"x24" R



Gris



48"x48" R



24"x48" R



12"x24" R



Negro



48"x48" R



24"x48" R



12"x24" R

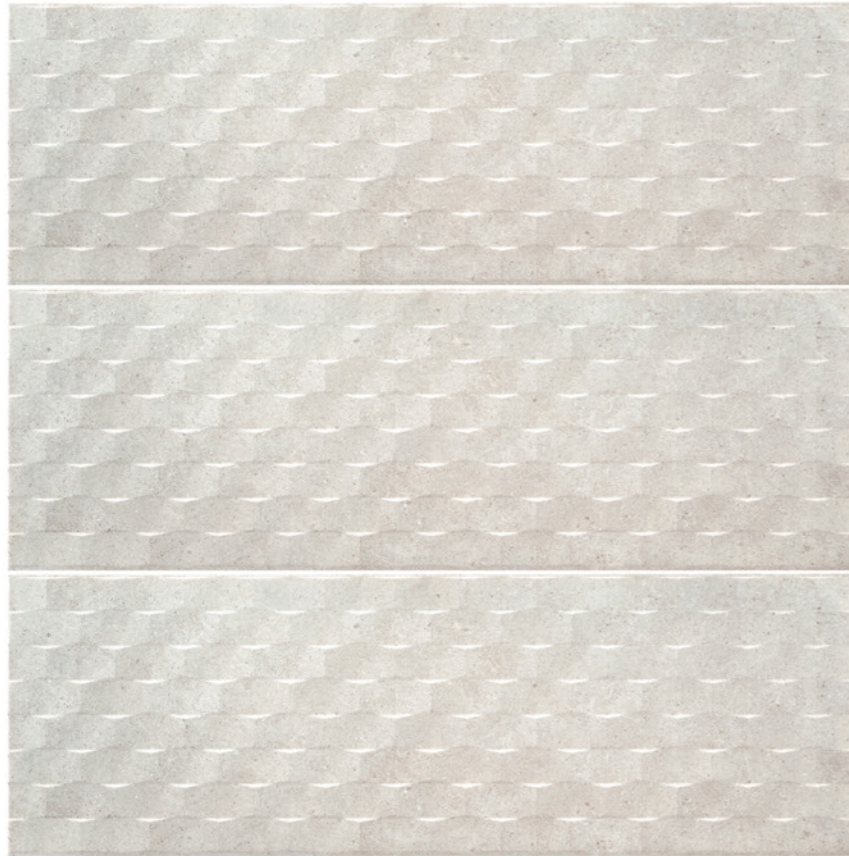
Stone Basel

Ceramic Wall



TILES BY TINA
www.tilesbytina.com

10.5 | M | V3 | **16"x48" R**
40x120 cm



Suite Caliza



16"x48" R

Technical Specifications (Floor)

CHARACTERISTICS	STANDARD	DECLARED ASTM
Water Absorption	C373	<=0.5%
Break Strength	C648	Min. 450
Scratch Hardness	MOH's Scale	5
Chemical Resistance	C650	Unaffected
Frost Resistance	C1026	Resistant
Group	See FAQ's	4
Deep Abrasion - Unglazed Tiles	C1243	Pass
PEI- Glazed Tiles***	C1027	-
Minimum Bond Strength (PSI)	C482	165
Dynamic Coefficient of Friction (DCOF)	A137.1	>=0.42
Shade and Texture Rating	CTDA "V"	V3
Facial Dimensions	C499	Pass
Range of Thickness	C499	Pass
Warpage	C485	Pass
Wedging	C502	Pass

Technical Specifications (Wall)

CHARACTERISTICS	STANDARD	DECLARED ASTM
Water Absorption	C373	>10%
Break Strength	C648	Meets or Exceeds
Scratch Hardness	MOH's Scale	-
Chemical Resistance	C650	Unaffected
Shade and Texture Rating	CTDA "V"	V3
Warpage	C485	Pass
Wedging	C502	Pass

Packaging Info

Size	SF per carton	PC per carton
12"x24" R	13.56	7
24"x48" R	15.50	2
16"x48" R	15.50	3
48"x48" R	31	2